



JANUARY 2022 NEWSLETTER

## PRESIDENT'S MESSAGE

from Lois Krueger

Happy New Year to all of KCFC,

Well what a year's it's been....  
I think we said this last year too....

I want to welcome a new member that is also new to the sport of Fly Fishing, Whit Simpson. I am certain we are all looking forward to meeting him when we start having in-person meetings again.

So after a lot of thought and discussion with the board we are getting a few different opinions on whether to start meeting in person again. I really need to hear from you as members of KCFC how you ALL want to proceed with this issue.

I've heard from several of you and I'm going to support you in whatever you decide, but I feel this needs to be a club decision at this point not just what your President decides.

Please contact me by email or phone.

[loislanehair67@gmail.com](mailto:loislanehair67@gmail.com)

541-539-1555.

May this new year bring your health and happiness and rivers overflowing.



**CALENDAR**

Jan 18, 2022 – Monthly Club Meeting – **TBD**

Feb 15, 2022 – Monthly Club Meeting – **Tentative**

Mar 15, 2022 – Monthly Club Meeting – **Tentative**

Apr 19, 2022 – Monthly Club Meeting – **Tentative**

**THE KCFC MISSION STATEMENT**

We, the Klamath Country Fly Casters, out of a vital interest in the sport of fly fishing, do hereby join to promote fly fishing as a method of angling, to encourage youth to learn this method of angling, and to promote and participate in meetings to educate all persons in the many aspects of fly fishing as a sport. We agree to make every effort to protect and improve fishing resources in our area by encouraging the practice of catch and release fishing of wild, native fish and by supporting fly fishing organizations in other areas in the overall quest for improvement and perpetuity of fishing resources.

**OFFICERS AND BOARD**

**Lois Krueger**

[lk.timefliesoutfitters@yahoo.com](mailto:lk.timefliesoutfitters@yahoo.com)  
President

**Peter Calvo**

[nogndr@petercalvo.com](mailto:nogndr@petercalvo.com)  
Vice President/President Elect

**Marie Ganong**

<http://mganong@aol.com>  
Treasurer

**Carl Gurske**

<http://carlgurske@gmail.com>  
Secretary

**John Krueger**

[jk@timefliesoutfitters.com](mailto:jk@timefliesoutfitters.com)  
Past President

**Jim Eiman**

[jimeiman@gmail.com](mailto:jimeiman@gmail.com)  
Board Member

**Bob Kingzett**

[bobk@wendtff.org](mailto:bobk@wendtff.org)  
Board Member

**Kevin Westfall**

[kevincwestfall@gmail.com](mailto:kevincwestfall@gmail.com)  
Board Member

**Greg Williams**

[greg.williams@charter.net](mailto:greg.williams@charter.net)  
Board Member

The members of the board of Klamath Country Fly Casters put forth this statement:

"We invite people to become board members of the Klamath Country Fly Casters who wish to promote a healthy and harmonious sense of collegial spirit within the environmental milieu of our board. We on the board, choose to care for the well-being of board members, Club members, and for our fly-fishing community. We ask those who want to be board members to practice positive intervention, to work harmoniously with other board members, and to be willing to promote well-being amongst fellow members of the Klamath Country Fly Casters and our community."

**COMMITTEES**

Conservation: Vacant

Education: Greg Williams

Fly Tying: Ralph Carestia

Membership: Mark Kelley

Outings Coordinator: Kris Henry

Programs: Bob Kingzett

Social Events & Auction: Lois Krueger

Monthly Raffle: Marie Ganong

ORCFFI Club Representative, Newsletter Editor,

Budget and Communications: Dale Zemke

Regular KCFC meetings are held on the third Tuesday of the month, September through May, at the Waffle Hut 106 Main Street, Klamath Falls. Dinner starts at 6:00 with the meeting beginning at 7:00. Board members, please be there at 5:00.

The KCFC website is: [www.klamathcountryflycasters.com](http://www.klamathcountryflycasters.com)





**An Upcoming Youth Education Event**  
**Volunteers Are Needed**

**P.L.A.Y. Outdoors, January 22, 2022**



Hello KCFC Members,

PLAY OUTDOORS is a go this year as they feel the kids really need it more than ever.

John and Lois will be out of town during this event so Greg Williams will be taking charge this year. We need volunteers to help these kids learn how to tie a basic fly.

If you can commit to this and have a few hours to spend with some great kids, please contact Greg Williams at: 541-891-5128 or [greg.williams@charter.net](mailto:greg.williams@charter.net)

It's an awesome event and we can definitely use your support.



## KCFC SUPPORTS VITAL REDBAND STREAM REVITALIZATION PROJECT BY BOB KINGZETT, KCFC PROGRAM CHAIR

Well it certainly has been a tough couple of years for KCFC with a dearth of meetings, no programs and generally just a blah time for us....with the exception of a great auction this past Summer. So now let's end this year on a positive note and salute a really terrific Redband Trout spawning bed project on Crooked Creek, about 6 miles South of Fort Klamath that KCFC made a significant contribution to.

Mike Weaver, a volunteer from the 500 Club, came to an informal board meeting and dinner @ the Kruger's this past Fall and pitched a request for financial support for the project. The 500 Club is the name of an informal group of guys who fish the lake a lot and have all caught at least 500 Redbands out of the lake over the years (not all of them are fly fishermen, hopefully we can overlook that nuance!) They have aligned themselves to do conservation projects, especially spawning gravel efforts in the feeder streams to Klamath Lake. Following Weaver's solid presentation asking for support, the board unanimously voted to provide \$3,000 for the project.

The project team included local rancher and enthusiastic conservationist, Kurt Thomas who owns both sides of Crooked Creek for about 3-4 river miles, ODF&W biologist, Bill Tinniswood, the 500 Club, Diversified Contractors and some specialized equipment operators for trenching and distributing gravel.

Prior to even beginning on the stream restoration project work, Thomas realized that he had to do some significant work to fence cattle out of the stream. "Cattle having grazed and watered in the creek for decades had caused the creek to be wider and warmer than it had been," Thomas said. "We also have put in tons of woody debris that helps to create some smaller riffles and provide shade for fish in the stream," Thomas stated.

Thomas said that he had been thinking about spawning habitat work for at least a decade and he had done some initial work some 7-8 years ago that was really not successful. He said the initiation for the current project began over 2 years ago with the construction over time of five carefully crafted riffles to alter the creek structure and prepare it for the important spawning gravel.





Thomas said that the process of learning how to do the stream alteration process has taken a number of iterations. "At the beginning we really did not know how to excavate and set up the riffles properly," Thomas said. "And then getting the right sizing from the bottom to the top layers of the gravel proved to be quite a learning process as well, he added.

Crooked Creek is heavily pumice laden and you have to deal with a layer of such that is as deep as 5 to 6 feet according to Thomas. "When you excavate down through the pummy you eventually get to a hard crust basalt kind of surface," Thomas stated.

The building of proper riffles is quite a science, according to Thomas. "Our first attempt at riffle building, we made riffles that were too narrow and not deep enough," Thomas stated. "We now know that an ideal riffle should be as big as eight to nine feet wide and as much as 20 feet long," Thomas added.

Having the right equipment for the job is also critical according to Thomas. He owns an excavator and has a good operator to run such. And when the project gets to the gravel installation phase, Thomas and the protect team has rented a gravel truck that can fire gravel out over 60 feet. "It's really important to not get heavy rigs too close to the stream banks which are often wet land turf and can easily be damaged if the rigs get mired in the muck and pummy," Thomas stated.

Finding the correct sizing of gravel layers is also key, according to Thomas. "if you don't use the proper size of gravel the pummy fills right back in and you have not accomplished anything that will last, " Thomas stated. "We used too big a gravel in some of our first attempts, but now we really feel we have the sizing part of the equation down good," he added.

Thomas says that with the knowledge of the project team that current projects will not be a "stop gap" kind of effort. "These riffles and spawning beds will be functional at a high level for generations to come, he asserted. With a properly designed riffle, spawning beds at the head of the riffle are a perfect combination, according to Thomas. "Having Bill Tinniswood's guidance in all of this has been critical," Thomas said,

Tinniswood has been to the Crooked Creek project studying the riffles and says that he has seen redds in each one and has seen a fish on a redd already. "Fish will respond quickly to



newly made redds and use them even in the first year of their construction," Tinniswood said. "Work like this project is very exciting because it will make a measurable difference in our water sheds over time as we complete more of these," he added. "It's really encouraging to have folks volunteer and join us in conservation work with their equipment and resources and access to the streams like Kurt has provided, together we are making a difference," he concluded.

KCFC President, Lois Kruger said that she was really excited about KCFC's participation in the project. "When the weather gets a bit better a group of us want to go up and see the project," she said. "That's why a successful auction is so important to us, it is what helps provide resources to support great projects like this one, she added.

Thomas is also excited about the success of the first set of properly designed riffles and spawning beds. "It's a great start, but we can do more riffles and include repairing wetland areas as well," Thomas said. We know this work will help strengthen our world class Redband fishery," Thomas said, "and if it helps husband a new resource down the road of the return of Spring Chinook that would be magnificent," he said enthusiastically.



**ANNUAL CLUB DUES ARE DUE!**

Following our KCFC bylaws, membership renewals and dues were due as of October 1<sup>st</sup> each year. As of November 1<sup>st</sup>, the membership fees were considered **Past Due! Now they are very past due!**

In an era of ever-rising prices, our Club dues are still **\$35.00** per family! And, that includes two adult voting members!

Please print and fill out this form and mail it to:

Klamath Country Fly Casters  
 PO Box 324  
 Klamath Falls, Oregon 97601

**First voting member:**

Name:

---

Address:

---

Email:

---

Telephone:

---

**Second voting member:**

Name:

---

Address:

---

Email:

---

Telephone:

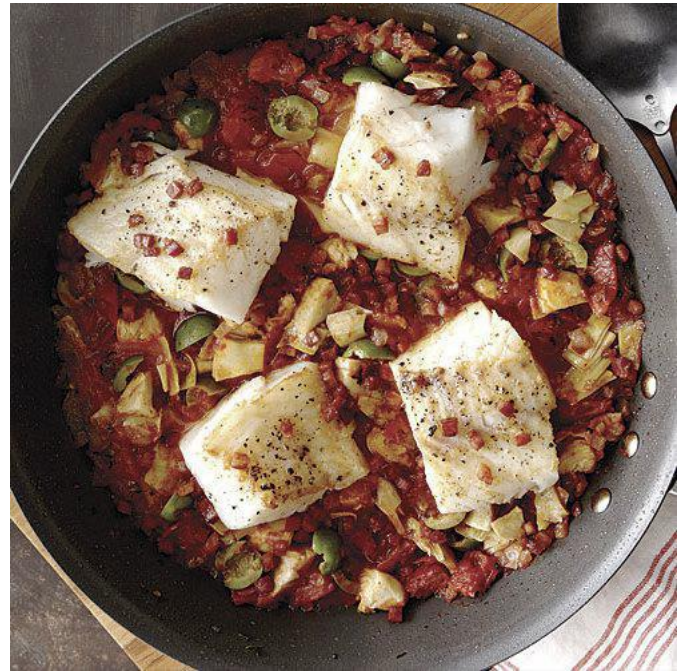
---





## Hooked on Fish

by Dale B Zemke



### Cod with Pancetta, Artichokes, and Olives

from [finecooking.com](http://finecooking.com)

Serves: 4

#### Ingredients

- 4 6-oz. pieces fresh cod loin fillet
- Kosher salt and freshly ground black pepper
- 2 Tbs. extra-virgin olive oil
- 2 oz. pancetta, cut into 1/4-inch dice (about 1/4 cup)
- 1 medium yellow onion, cut into 1/4-inch dice
- 1 tsp. fresh thyme leaves
- 1/8 to 1/4 tsp. crushed red pepper flakes
- 1/2 cup dry white wine
- 1 15-oz. can diced fire-roasted tomatoes in juice
- 1 cup marinated artichoke hearts, drained and chopped
- 1/2 cup large green olives, such as Castelvetrano, pitted and halved

#### Preparation Steps

1. Pat the cod dry and season with salt and pepper.
2. Heat the oil in a 12-inch nonstick skillet over medium-high heat. Add the pancetta and cook, stirring, until crisp and golden, 2 to 4 minutes. Using a slotted spoon, transfer the pancetta to a paper-towel-lined plate, leaving the fat behind in the pan.
3. Add the fish to the skillet and cook until slightly golden, about 3 minutes. Flip and transfer to a plate, seared side up.
4. Add the onion, thyme, and pepper flakes to the skillet; cook, stirring, until the onion is soft, about 4 minutes. Add the wine and cook until the pan is almost dry, about 1 minute.





5. Add the tomatoes and their juice, artichokes, and olives. Simmer, stirring occasionally, to meld the flavors, about 2 minutes.
6. Lower the heat to medium and nestle the fish into the sauce, keeping the seared side exposed. Cover and cook until the fish is opaque and just cooked through, about 3 minutes.
7. Sprinkle with the pancetta, divide among rimmed plates or wide, shallow bowls, and serve.

## Notes

Despite the ease of preparation—the fish, sauce, and side dish all cook in one skillet—this is a restaurant-worthy dinner. Serve it with good crusty bread to mop up the sauce.

## Nutrition

Serving Size: 4  
Calories: 340 kcal  
Fat: 140 kcal  
Saturated Fat: 2.5 g  
Unsaturated Fat: 10.5 g  
Trans Fat: 16 g  
Cholesterol: 75 mg  
Sodium: 1110 mg  
Carbohydrates: 13 g  
Fiber: 3 g  
Protein: 32 g



# INDESPENSIBLE FLIES

By Ralph Carestia

## Two-Tone Intruder



### The Two-Toned Intruder

The Intruder type flies started back in the early 90's with a circle of Alaskan guides who originally designed the fly for king salmon. While fishing these flies for kings, they notice that they would catch many huge Alaskan rainbows. It didn't take long to realize that rainbows couldn't resist the fly. The Two-Toned Intruder is a rather easy-to-tie streamer that works especially well with trout. It's darker back and lighter underbelly, along with just a little bit of flash, imitate a wide range of baitfish species that larger trout in particular often pursue.

**The Two-Toned Intruder is now a mainstay for trout fishing. Even under normal summer water conditions, I find natural-colored Intruders catch Brown and Rainbow Trout. When fishing the Intruder, cast slightly upstream. This takes tension off the fly and allows it to sink down to the fish's level. Just as the line is about to come tight, kick another small mend in it and straighten the remaining slack line.**

### Recipe:

<b>Hook shank:</b>	Fish Skull Articulated shank, size 20mm
<b>Thread:</b>	Brown, 6/0 or 140-denier
<b>Connection:</b>	Berkley Fire Line, 30-pound test
<b>Hook:</b>	Intruder-style hook, size 6-8-10
<b>Eyes:</b>	Gold bead-chain eyes, medium
<b>Butt:</b>	<b>Spirit River UV tan</b> Ice dubbing
<b>Flash:</b>	Krystal Flash
<b>Back:</b>	Brown zonked pine-squirrel zonker strip
<b>Belly:</b>	Mottled Tan Brahma hen
<b>Adhesive:</b>	<b>Solarez Bone Dry</b>

**Note:** Tie the pattern in different complementary-color combinations.

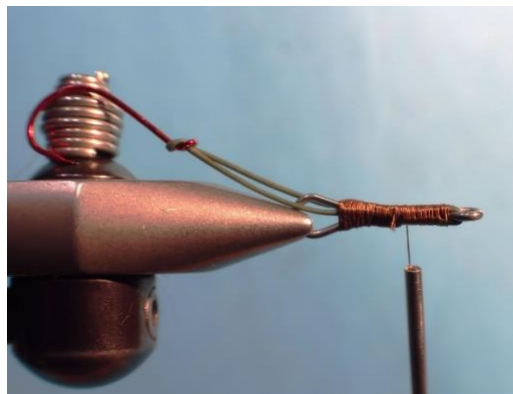


**Instructions:**

1. Place the shank in your tying vice. Attach the thread just behind the eye, and wrap it down to the opposite end of the shank.



2. Fold a length of Fire Line in half with the ends aligned. Insert the ends from back to front, through the eye of a size 8 intruder-style hook. Lay the Fire Line against the near side of the shank at the location of your tying thread and secure it. Bind the Fire Line to the top of the shank toward the eye, then tuck the ends down through the eye and begin binding them to the underside of the shank. Snip any excess, then continue binding the material down. Apply head cement adhesive to the entire shank.



3. Create a hot spot at the rear end of the fly. Use the UV tan Ice dubbing to make a long noodle on your tying thread. Take wraps with the noodle to create a little ball in front of back end of the shank.



4. **Snip a 2-bead-length free from the gold bead-chain. Turn the shank over so its underside faces up, then use cross wraps to begin securing the bead chain to the shank. Use a small amount of superglue to secure the bead chain to the hook. Flip the fly back to its normal orientation and take thread wraps to the rear of the shank.**



5. **Gold Krystal Flash is used to add a little shimmer to the pattern. Snip just 3 or 4 strands free from the hank. Pull half the strands down, on either side of the shank. Krystal Flash strands back and trim them off. Align the end of the Zonked pine squirrel with the hook point. Bind the skin to the top of the shank – first with two wraps over top of it, then two around just the shank. Pull the forward portion of the strip back out of the way.**



6. **Mottled Golden Brahma hen is used to create the lighter, underside of the fly. Prep the feathers by stripping off all the lower webby fluffy fibers. Then, with the front side of the feather facing you, get hold of its tip, and preen down the lower fibers to isolate that tip. Strip off the far side of the feather and wrap it forward until you reach bare stem. Anchor it and snip the excess off.**





- Repeat this feather prep and tie-in procedure with 4 or 5 more Brahma hen feathers going up the shank.



- Split the Brahma hen fibers to either side of the shank. Make a landing area for the pine squirrel Zonker strip. Pull the strip forward and bind the strip down behind the eyes and snip off the excess as close as possible.



- With the head looking good, get hold of your whip finish tool and use it to whip finish the fly.





**Top View**



**Bottom View**



**Completed Fly**



**Olive Two Tone Intruder**

